



SEA TURTLE SMARTS



OBSERVING HATCHLINGS



STXTURTLES.COM

DO KEEP THE BEACH DARK, FLAT AND CLEAN!

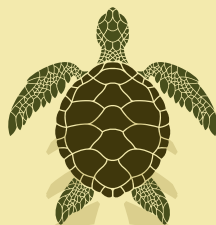
DO KEEP PREDATORS (MONGOOSE, BIRDS, CRABS, DOGS) AWAY FROM A HATCHING NEST



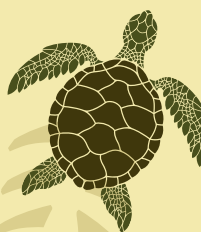
DO KEEP LIGHTS THAT ARE VISIBLE FROM THE BEACH TURNED OFF OR REPLACED WITH RED BULBS TO PREVENT DISORIENTATION



DO NOT TOUCH HATCHLINGS - LET THEM CRAWL TO THE WATER ON THEIR OWN



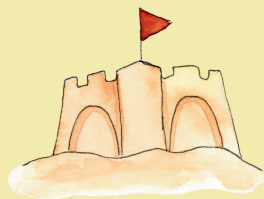
DO KEEP DOGS ON A LEASH OR UNDER SUPERVISION. THEY CAN QUICKLY KILL A HATCHLING OR DIG UP A NEST



DO CALL US IF YOU SEE DISORIENTED HATCHLINGS. SEA TURTLE ASSISTANCE & RESCUE 340-690-0474

DO NOT DRIVE OR PARK ON THE BEACH. TURTLES NEST ON ALL ST. CROIX BEACHES!

DO FILL IN HOLES IN THE BEACH AND PLACE UMBRELLAS IN BUCKETS - NOT DIRECTLY IN SAND



DO TAKE ALL TRASH AWAY FROM THE BEACH TO AVOID ATTRACTING TURTLE PREDATORS



THE ST. CROIX SEA TURTLE PROJECT